

SMSA EXPRESS WH GROUND FLOOR LAYOUT & EVACUATION PLAN

Scale: NTS

BEHAVIOR IN CASE OF FIRE - STAY CALM

- Report a Fire
- Activate the nearest fire alarm (manual call point) lift the cover up/ break the glass. Call Civil Defense on 997
- Who is reporting ? What was happened?
- How many persons injured?
- Where is the location?
- Wait for the call back
- Assembly Point
- Warn the employees and visitors
- Follow the escape route
- Go to the assembly point located near the front shutters or the emergency exit at the back side
- Do not re-enter the warehouse until you are told it is safe

BEHAVIOR IN CASE OF ACCIDENT- STAY CALM

- Report an Accident
- Call the Ambulance on 998
- Where is the location?
- Who is reporting ? What has happened?
- How many persons injured?
- Wait for the call back
- First Aid
- Safeguard place of accident
- Take care of injured people

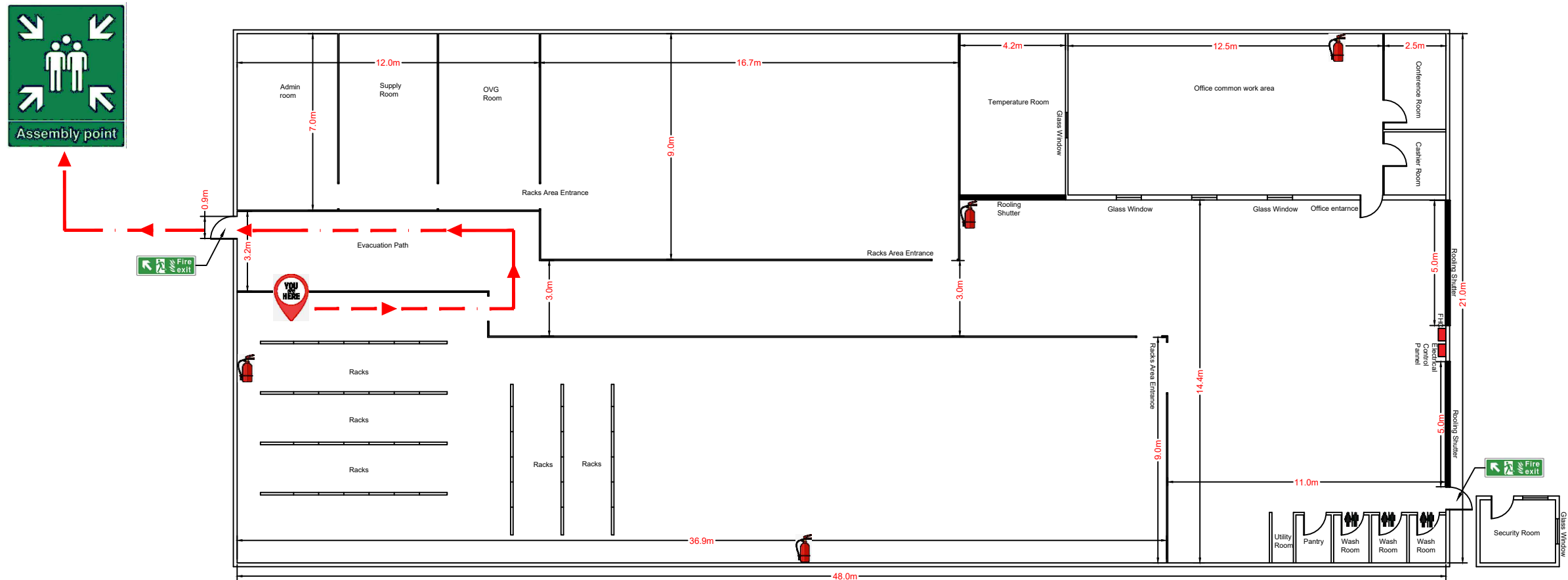
Pay attention to the instructions of medical personnel/First Aiders

Police: 999

Ambulance: 998

Civil Defense: 997

	YOU ARE HERE		FIRE HOSE REEL
	EMERGENCY EXIT		FIRE EXTINGUISHER
	PRIMARY EXIT ROUTE		ASSEMBLY AREA
	SECONDARY EXIT ROUTE		MANUAL FIRE ALARM



SMSA EXPRESS WH GROUND FLOOR LAYOUT & EVACUATION PLAN

Scale: NTS

BEHAVIOR IN CASE OF FIRE - STAY CALM

- Report a Fire
- Activate the nearest fire alarm (manual call point) lift the cover up/ break the glass. Call Civil Defense on 997
- Who is reporting ? What was happened?
- How many persons injured?
- Where is the location?
- Wait for the call back
- Assembly Point
- Warn the employees and visitors
- Follow the escape route
- Go to the assembly point located near the front shutters or the emergency exit at the back side
- Do not re-enter the warehouse until you are told it is safe

BEHAVIOR IN CASE OF ACCIDENT- STAY CALM

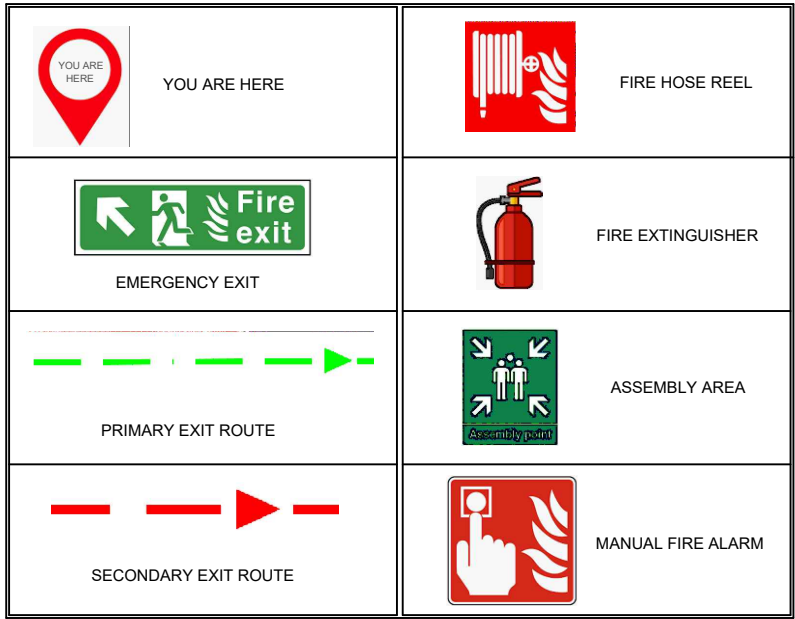
- Report an Accident
- Call the Ambulance on 998
- Where is the location?
- Who is reporting ? What has happened?
- How many persons injured?
- Wait for the call back
- First Aid
- Safeguard place of accident
- Take care of injured people

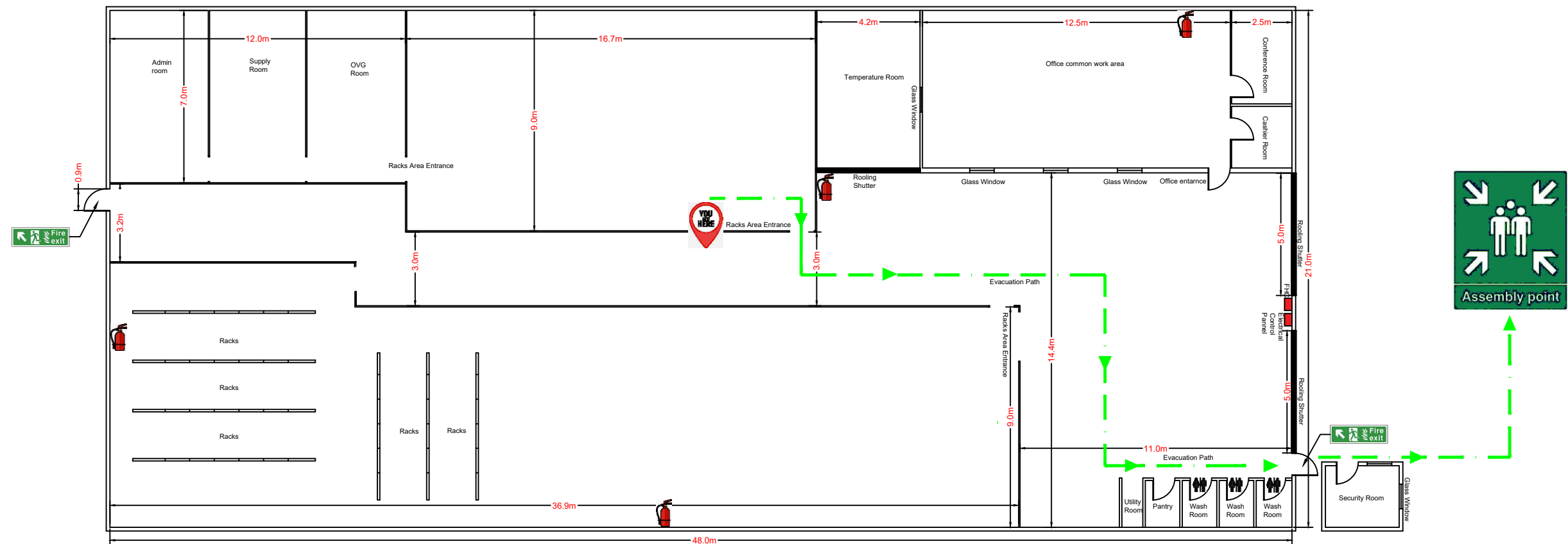
Pay attention to the instructions of medical personnel/First Aiders

Police: 999

Ambulance: 998

Civil Defense: 997

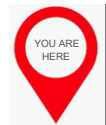









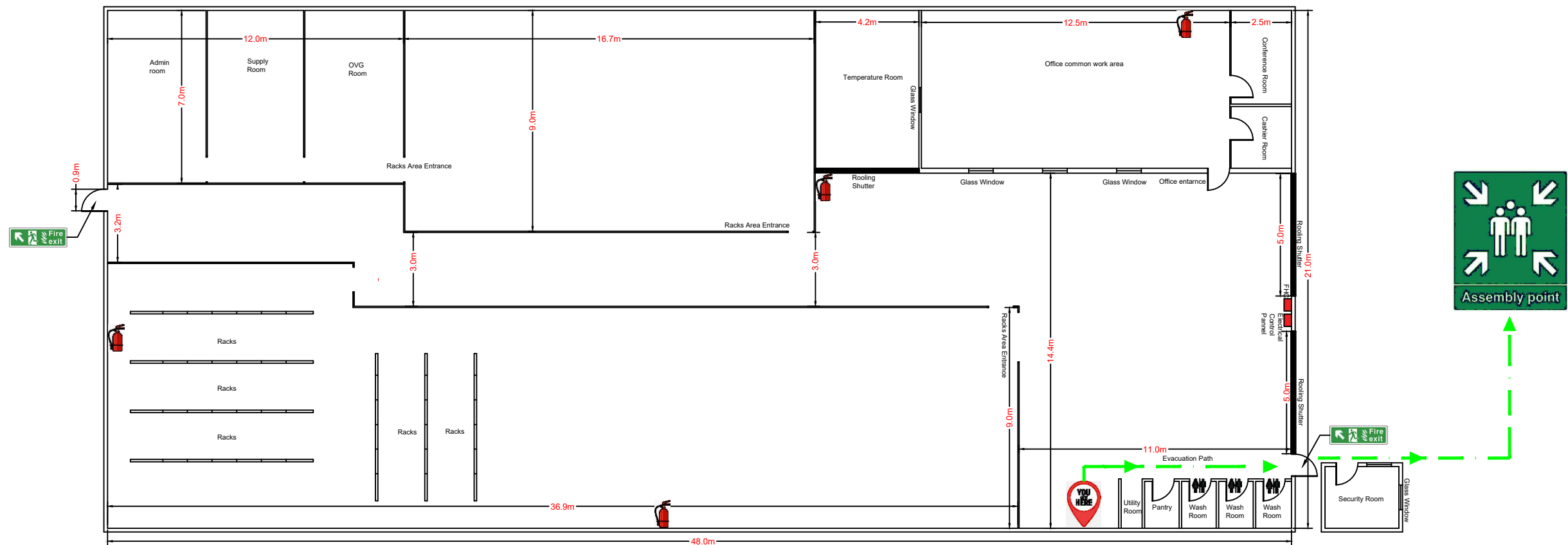


SMSA EXPRESS WH GROUND FLOOR LAYOUT & EVACUATION PLAN

Scale: NTS

BEHAVIOR IN CASE OF FIRE - STAY CALM		
Report a Fire		
Activate the nearest fire alarm (manual call point) lift the cover up/ break the glass. Call Civil Defense on 997		
Who is reporting ? What was happened?		
How many persons injured?		
Where is the location?		
Wait for the call back		
Assembly Point		
Warn the employees and visitors		
Follow the escape route		
Go to the assembly point located near the front shutters or the emergency exit at the back side		
Do not re-enter the warehouse until you are told it is safe		
BEHAVIOR IN CASE OF ACCIDENT- STAY CALM		
Report an Accident		
Call the Ambulance on 998		
Where is the location?		
Who is reporting ? What has happened?		
How many persons injured?		
Wait for the call back		
First Aid		
Safeguard place of accident		
Take care of injured people		
Pay attention to the instructions of medical personnel/First Aiders		
Police: 999	Ambulance: 998	Civil Defense: 997

	YOU ARE HERE		FIRE HOSE REEL
	EMERGENCY EXIT		FIRE EXTINGUISHER
	PRIMARY EXIT ROUTE		ASSEMBLY AREA
	SECONDARY EXIT ROUTE		MANUAL FIRE ALARM



SMSA EXPRESS WH GROUND FLOOR LAYOUT & EVACUATION PLAN

Scale: NTS

BEHAVIOR IN CASE OF FIRE - STAY CALM

- Report a Fire
- Activate the nearest fire alarm (manual call point) lift the cover up/ break the glass. Call Civil Defense on 997
- Who is reporting ? What was happened?
- How many persons injured?
- Where is the location?
- Wait for the call back
- Assembly Point
- Warn the employees and visitors
- Follow the escape route
- Go to the assembly point located near the front shutters or the emergency exit at the back side
- Do not re-enter the warehouse until you are told it is safe

BEHAVIOR IN CASE OF ACCIDENT- STAY CALM

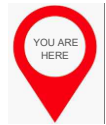







- Report an Accident
- Call the Ambulance on 998
- Where is the location?
- Who is reporting ? What has happened?
- How many persons injured?
- Wait for the call back
- First Aid
- Safeguard place of accident
- Take care of injured people

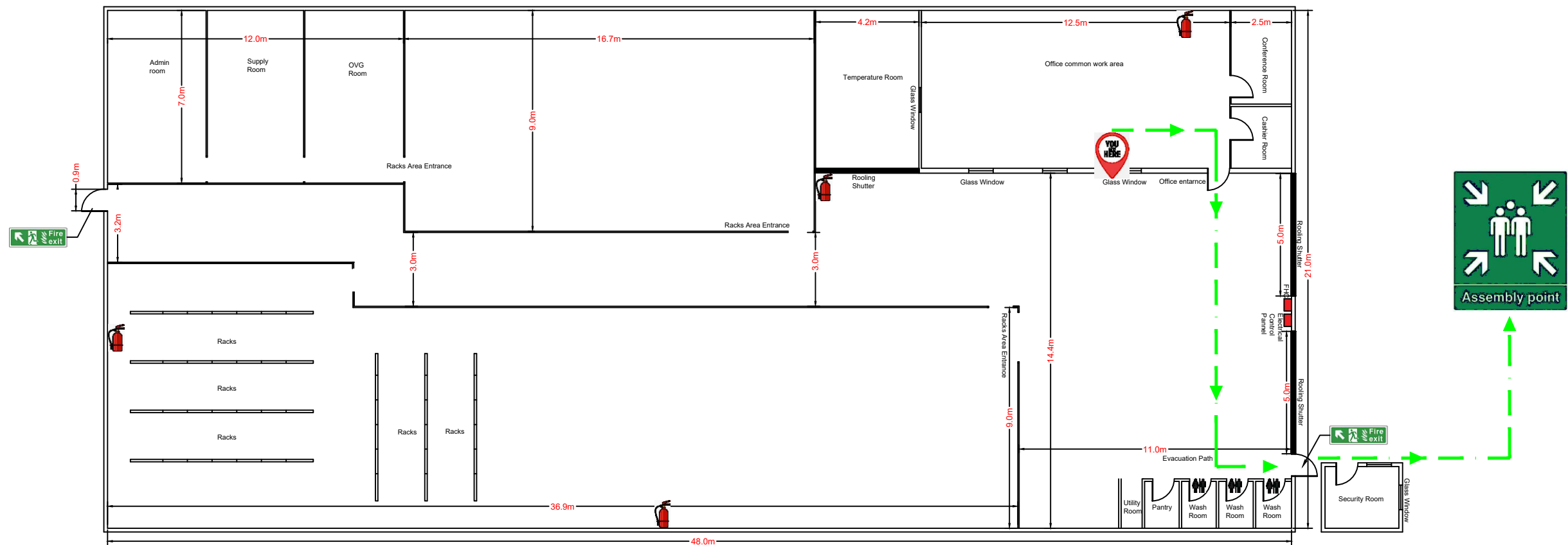
Pay attention to the instructions of medical personnel/First Aiders

Police: 999

Ambulance: 998

Civil Defense: 997

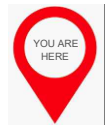







 <div>YOU ARE HERE</div>	 <div>FIRE HOSE REEL</div>
 <div>EMERGENCY EXIT</div>	 <div>FIRE EXTINGUISHER</div>
 <div>PRIMARY EXIT ROUTE</div>	 <div>ASSEMBLY AREA</div>
 <div>SECONDARY EXIT ROUTE</div>	 <div>MANUAL FIRE ALARM</div>

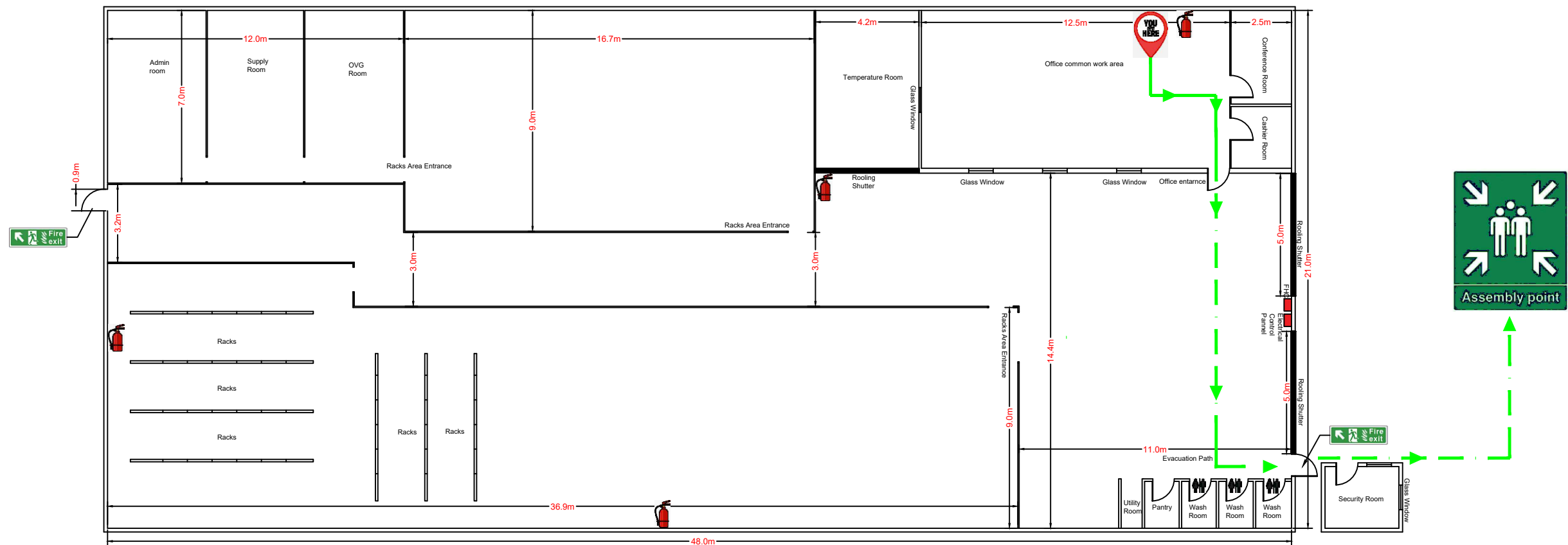


SMSA EXPRESS WH GROUND FLOOR LAYOUT & EVACUATION PLAN

Scale: NTS

BEHAVIOR IN CASE OF FIRE - STAY CALM		
Report a Fire		
Activate the nearest fire alarm (manual call point) lift the cover up/ break the glass. Call Civil Defense on 997		
Who is reporting ? What was happened?		
How many persons injured?		
Where is the location?		
Wait for the call back		
Assembly Point		
Warn the employees and visitors		
Follow the escape route		
Go to the assembly point located near the front shutters or the emergency exit at the back side		
Do not re-enter the warehouse until you are told it is safe		
BEHAVIOR IN CASE OF ACCIDENT- STAY CALM		
Report an Accident		
Call the Ambulance on 998		
Where is the location?		
Who is reporting ? What has happened?		
How many persons injured?		
Wait for the call back		
First Aid		
Safeguard place of accident		
Take care of injured people		
Pay attention to the instructions of medical personnel/First Aiders		
Police: 999	Ambulance: 998	Civil Defense: 997

 YOU ARE HERE	 FIRE HOSE REEL
 EMERGENCY EXIT	 FIRE EXTINGUISHER
 PRIMARY EXIT ROUTE	 ASSEMBLY AREA
 SECONDARY EXIT ROUTE	 MANUAL FIRE ALARM



SMSA EXPRESS WH GROUND FLOOR LAYOUT & EVACUATION PLAN

Scale: NTS

BEHAVIOR IN CASE OF FIRE - STAY CALM

- Report a Fire
- Activate the nearest fire alarm (manual call point) lift the cover up/ break the glass. Call Civil Defense on 997
- Who is reporting ? What was happened?
- How many persons injured?
- Where is the location?
- Wait for the call back
- Assembly Point
- Warn the employees and visitors
- Follow the escape route
- Go to the assembly point located near the front shutters or the emergency exit at the back side
- Do not re-enter the warehouse until you are told it is safe

BEHAVIOR IN CASE OF ACCIDENT- STAY CALM

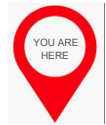







- Report an Accident
- Call the Ambulance on 998
- Where is the location?
- Who is reporting ? What has happened?
- How many persons injured?
- Wait for the call back
- First Aid
- Safeguard place of accident
- Take care of injured people

Pay attention to the instructions of medical personnel/First Aiders

Police: 999

Ambulance: 998

Civil Defense: 997

	YOU ARE HERE		FIRE HOSE REEL
	EMERGENCY EXIT		FIRE EXTINGUISHER
	PRIMARY EXIT ROUTE		ASSEMBLY AREA
	SECONDARY EXIT ROUTE		MANUAL FIRE ALARM